



PNEUMATIC GREASE PUMP RATIO 30:1

For Serial Lubrication Systems

3413001

PRODUCT DATA SHEET

ENGLISH

DESCRIPTION:

This pump boosts the operating air pressure 30 times. It has an adjustable delivery rate.

The pumping assembly consists of a steel body with hardened lapped piston.

The operating assembly consists of a cylinder housing a light alloy piston equipped with oil resisting gaskets.

Springs are provided to pull the piston back to its starting position.

A 3-way (line-cylinder discharge) solenoid control valve is required. Energising time should be 1 second or more per control pulse.

SPECIFICATION:

- Delivery: adjustable 0,5 to 2,0 cc.
(0.03 to 0.12 cu. in.) per stroke
- Operating Air Pressure: 4 to 8 bar. (58 to 116 psi.)
- Weight:
- Pump only: 4,6 Kg. (10.15 lbs.).
- Pump and reservoir: 7,7 Kg. (17 lbs.) Approx.
- Electrical Equipment:

ORDERING INFORMATION:

- Ordering is by Part No. and Description:
- Part No. 3413000 Pneumatic Pump (Pump only no reservoir)
- Part No. 3413001 Pneumatic Pump (Complete with reservoir).

INSTALLATION/OPERATION:

MAINTENANCE:

Filter cleaning:

Unhook reservoir hinge, remove pressure piston by pressing pushbutton while pulling handle (should piston refuse to come out, incline it to assist air entering between piston and grease). Remove residual grease and filter (2.). Use petrol or kerosene and fluid oil to wash, then replace.

Pump cleaning.:



Separate pressure piping (delivery side) then, after cleaning filter as instructed loosen plug (37.) and remove piston (16.) gasket (33.) plate (36.) spring (17.) and indicator rod (31.) with spring (32.) special care should be taken not to damage gasket (33.). Take out piston (23.) check for efficiency, then check condition of gasket (22.).

Use screw (7.) to fasten body (10.) to support (9.). Access to valve (40.) and spring (39.) may be gained by removing plug (4.).

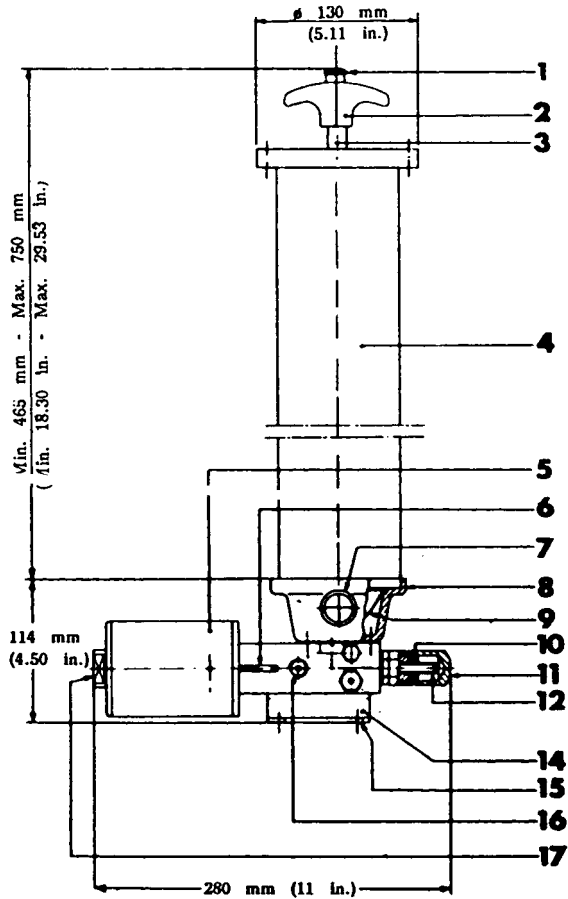
Clean the whole assembly with petrol or kerosene and fluid oil.

Fill reservoir with clean grease, then operate pump until lubricant is discharged free from air bubbles. The pump is now ready for connection to the system.

Solenoid Control Valve:

Voltage	Max. pause time.	Part No.
110V 50Hz.	1 Hour	1641190
	4 Hour	1641199
220V 50Hz.	1 Hour	1641198
	4 Hour	1641214

Dimensions and description of parts:
refer to Fig. 1.)



Item No.	Part No.	Description/Operation.
1.	182006	Pushbutton. Use to eliminate seal between pressure plate and lubricant to facilitate removal of plate.
2.-3.	182005	Handle. Use to remove pressure plate Level-gauge. Rod for 2Kg. (4.40lbs.) reservoirs. Two red marks on long rod indicate minimum and maximum levels respectively. A hole at max. level protects reservoirs from overpressure.

4.	182000	2Kg. (4.40lbs.) Reservoir. A tubular aluminium container with rod, pressure plate and lid.
5.	-	Pneumatic control unit.
6.	3002019	Control piston monitor rod.
7.	3093050	Filler valve, 1/2" cylindrical gas thread.
8.	3045101	Flange. Cast light alloy, oil resisting finish. Used to fasten reservoir to pump.
9.	3130100	Filter 120 mesh/sq. cm. (775 mesh/sq. in.). Galvanised steel wire. Ample filtering area. Should be cleaned every 6 months or less (particularly if heavily contaminated grease is used). To clean, remove reservoir, wash filter with petrol or kerosene, then rinse with fluid oil.
10.	16406	Nut. Will lock the flow control unit.
11.	3042113	Flow control unit protector.
12.	3001110	Pressure control boss. Use to adjust delivery rate anywhere between 0,5 and 2,0 cc. (0.03 and 0.12 cu. in.) per stroke. Turn counter-clockwise to increase flow. Do not adjust under pressure.
14.	3041157	Pump Support. Galvanised Steel Plate construction.
15.	-	4 pump mounting holes 8,5 mm. (0.35 in.) dia.
16.	-	Lubricant outlet. 1/4" NPT Thread.
17.	-	Air intake for pneumatic control unit, 1/8" NPT Thread.

TEST PROCEDURES:

Available on request.

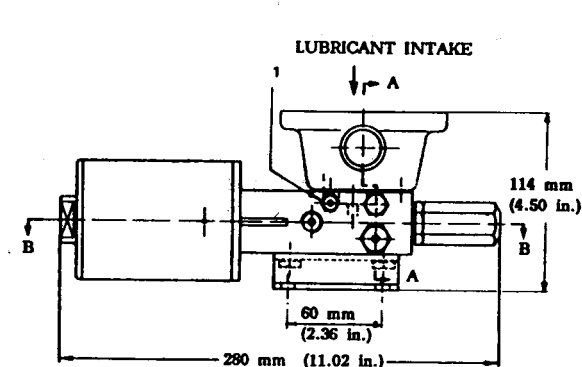
SPARES:

Refer to Fig. 2. and the table on page 4.

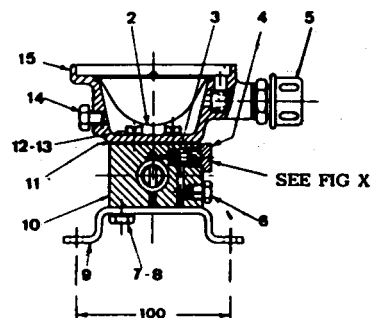
OPERATING ENVIRONMENT:

Pneumatic Grease Pumps must not be operated submerged in fluid or in excessively corrosive or aggressive environments. If in doubt please contact our technical office.

SPARES



A - A CROSS SECTION



B-B CROSS SECTION

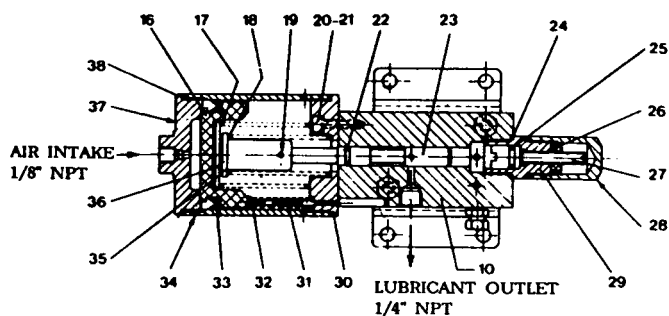
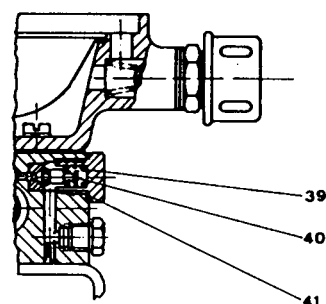


FIG X



Item	Part No.	Description	Qty.
1	3230103	Plug 10mm. spanner.	1
2	3130100	Filter, 120 mesh per sq. cm.	1
3	18801	Gasket, OR	1
4	3234108	Plug, 14mm. spanner	1
5	3093050	Valve, filter	
6	91144	Plug	
7	11401	Screws, hex. head, M8x16	
8	16012	Washer, split	
9	3041157	Support	
10	3072067	Pump body w/ Pins	
11	3190129	Gasket, Petrolvis	
12	12696	Screws, taper head, M6x14	
13	97010	Gasket copper	
14	91144	Plug, 1/8" gas thread, 10mm spanner	
15	3045101	Flange, reservoir fastening	
16	3101105	Piston	
17	3191129	Spring	
18	3191128	Spring	
19	16817	Pin	
20	14089	Screws, taper head, M6x20	

21	16009	Washers, split	
22	18808	Gasket OR	
23	3101104	Piston	
24	3190127	Gasket, copper	
25	18812	Gasket, OR	
26	16406	Nut, hex., M8	
27	3001110	Boss	
28	3042113	Protector	
29	3084140	Fitting	
30	3045109	Flange, conn	
31	3002109	Rod	
32	3191126	Spring	
33	53233	Gasket, DE	
34	3113102	Cylinder	
35	3024100	Pushbutton	
36	3131101	Plate	
37	3234109	Plug cylinder	
38	3190128	Gasket, Dalmar	
39	3191100	Spring	
40	3096102	Valve, ball head	
41	3190101	Gasket, copper	

SAFETY REQUIREMENTS:

Pneumatic Grease Pumps must be installed and operated in accordance with the requirements of this Instruction Sheet. These pumps should not be used for any purpose other than as specified without the agreement of the supplier. Disconnect from the power supply before making any adjustments to the system or changing pump settings.

DIAGNOSTIC TABLE:

Failure	Possible cause.	Remedy.
To be added		



AN ISO 9001 APPROVED COMPANY

U.K.
Dropsa (UK) Ltd.
Unit 6, Egham Business Village,
Egham,
Surrey, TW20 8RB
Tel: (+44) 01784 - 431177
Fax: (+44) 01784 - 438598
E-mail: salesuk@dropsa.com

U.S.A.
Dropsa Corporation
50679 Wing Drive
Utica,
Michigan 48315,
Tel: (+1) 810-566-1540
Fax: (+1) 810-566-1541
E-mail: salesusa@dropsa.com

AUSTRALIA
Dropsa Australia Pty.
No. 7 Warringah Road
Dee Why
NSW 2099
Tel: (+61) 2 9905 0410
Fax: (+61) 2 99394142
E-mail: sales@dropsa.com

GERMANY
Dropsa Gmbh.
Volmerswerther Strasse 80
40221 Dusseldorf 1,
Deutschland
Tel: (+49) 0211-394-011
Fax: (+49) 0211-394-013
E-mail: sales@dropsa.de

ITALY
Dropsa Spa
Via B. Croce, 1 - 20090
Vimodrone (MI)
Tel: (+39) 02 - 250.79.1
Fax: (+39) 02 - 250.79.767
E-mail: sales@dropsa.it (Export)
E-mail: vendite@dropsa.it (National)

© Copyright Dropsa - all rights reserved. Reproduction of any part of this document is strictly forbidden without prior consent from Dropsa. Dropsa reserve the right to withdraw or modify specifications without prior notice.