



DROPSA INDUCTIVE PROXIMITY SENSOR

1523739
1523812

PRODUCT DATA SHEET

ENGLISH

1. DESCRIPTION:

This sensor has been designed to check the function of progressive metering systems. It enables monitoring of metering element piston movement in DROPSA system 26 "SMX" modules.

In the event of incorrect operation the sensor will show that the piston has not moved.

The sensor is attached to the progressive metering element and accurately checks the back and forth movement of the metering piston.

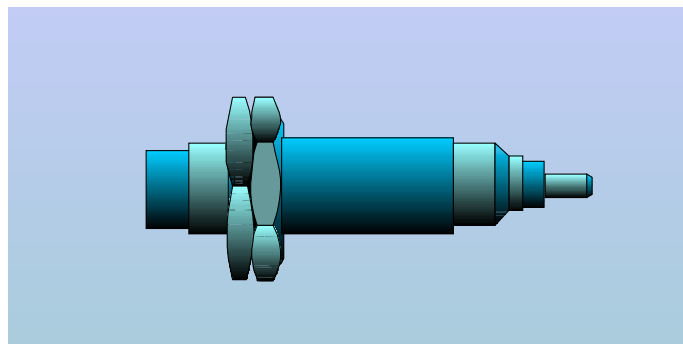
Note: The piston does not come into contact with the sensor, this is prevented by a positive stop arrangement. Care must be taken during assembly to ensure that the sensor is not over-tightened onto the positive stop, as this will cause the sensor to be damaged.

If a signal of piston movement is not received by the sensor from the progressive element an alarm condition can be initiated by some form of electronic controller.

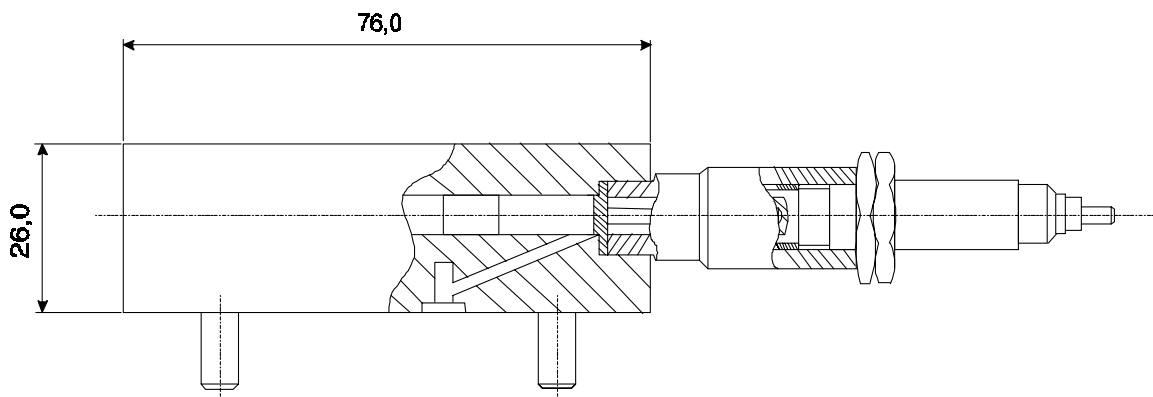
This signal can be used to activate a fault light, sound an alarm or shut down the machine if required.

2. SPECIFICATION:

Nominal sensing range:	5 mm.
Operating voltage:	10V - 30V
Hysteresis: (%Sn)	<10% mm.
Maximum operating frequency:	200Hz.



Repeatability:	<0,01 mm.
Current rating continuous:	100mA
Maximum load current:	200mA
Short circuit protection:	YES
LED Indicator:	YES
Voltage drop:	1.8V
Leakage current:	1.8mA
Pressure of lubricant:	35MPa (350 bar) max.
Operating temperature:	-25oC to + 70oC
Protection degree:	IP 67
Case material:	ANSI 303



Assembly diagram

Connection: PVC cable 2m/3x020mm.

3. ORDERING INFORMATION:

Ordering is by Part No. according to application. See table:

SMX - NPN

Assembly Part No.	DELIVERY		SENSOR
	cc.	cu. in.	
641451	0,04	0.0024	1523739
641452	0,08	0.005	
641453	0,16	0.010	
641454	0,25	0.015	
641455	0,35	0.021	
641456	0,40	0.025	
641457	0,50	0.030	
641458	0,60	0.036	
641459	0,65	0.040	

SMX - PNP

Assembly Part No.	DELIVERY		SENSOR
	cc.	cu. in.	
641469	0,04	0.0024	1523812
641470	0,08	0.005	
641471	0,16	0.010	
641472	0,25	0.015	
641473	0,35	0.021	
641474	0,40	0.025	
641475	0,50	0.030	
641476	0,60	0.036	
641477	0,65	0.040	

SMO - NPN

Assembly Part No.	DELIVERY		SENSOR
	cc.	cu. in.	
641478	0,04	0.0024	1523739
641479	0,08	0.005	
641480	0,16	0.010	
641481	0,25	0.015	

SMO - PNP

Assembly Part No.	DELIVERY		SENSOR
	cc.	cu. in.	
641482	0,04	0.0024	1523812
641483	0,08	0.005	
641484	0,16	0.010	
641818	0,25	0.015	

4. RELATED PRODUCTS:

SMX Progressive metering system (serial 26).



U.K.
Dropsa (UK) Ltd.
Unit 6, Egham Business Village,
Egham,
Surrey, TW20 8RB
Tel: (+44) 01784 - 431177
Fax: (+44) 01784 - 438598
E-mail: salesuk@dropsa.com

U.S.A.
Dropsa Corporation
50879 Wing Drive
Utica,
Michigan 48315,
Tel: (+1) 810-568-1540
Fax: (+1) 810-566-1541
E-mail: salesusa@dropsa.com

AUSTRALIA
Dropsa Australia Pty.
No. 7 Warringah Road
Dee Why
NSW 2099
Tel: (+61) 2 9905 0410
Fax: (+61) 2 9939 1142
E-mail: sales@dropsa.com

GERMANY
Dropsa GmbH.
Volmerswerther Strasse 80
40221 Düsseldorf 1,
Deutschland
Tel: (+49) 0211-394-011
Fax: (+49) 0211-394-013
E-mail: sales@dropsa.de

ITALY
Dropsa Spa
Via B. Croce, 1 - 20090
Vimodrone (MI)
Tel: (+39) 02 - 250.79.1
Fax: (+39) 02 - 250.79.767
E-mail: sales@dropsa.it (Export)
E-mail: vendite@dropsa.it (National)

© Copyright Dropsa - all rights reserved. Reproduction of any part of this document is strictly forbidden without prior consent from Dropsa. Dropsa reserve the right to withdraw or modify specifications without prior notice.