



777000 SERIES MOTORIZED PUMPS

For Oil or Grease Dual-Line Systems

777005 777271
777572
777060 777304
777207
777010 777311
777521
777040 777510

ENGLISH

PRODUCT DATA SHEET

DESCRIPTION

Heavy Duty Pump suitable for Oil or Grease. Maximum Pressure 500 Bar (7250 PSI.). DropsA 777000 Series Modular Motorized Pump is suitable for a wide range of applications. Once installed it is a simple operation to adjust the pressure and adjust the lubricant output (using a flow control) Part No. 3293060.

The 777000 Assembly Consists of:

- Motor and Reduction Unit
- Pump
- Reservoir
- Valves and Delivery Unit
- Pressure Gauge
- Re-Filling Filter

SPECIFICATIONS

Lubricant: Oil or Grease

Adjustable Delivery: From 65 to 130 cc./minute (4 to 8 cu. In./minute) with 1500 RPM Electric Motor

Maximum Pressure: 500 BAR (7250 PSI.)

Viscosity: Oil Minimum 100 cSt., Grease Maximum 220 ASTM (NLGI-3).

Pump: Double Body Type 4 Pistons

Delivery Line: Single Line or Dual Line

Reservoir Capacity: 10, 30 and 100 KG. (22, 66 and 220 LB.)

Three Phase Motor: 220/380 Volt 50/60 Hz. 4 Pole. 1500 RPM, 0.37 KW (Temperatures to 0° C. (32° F.) or 0.75 KW (Temperatures to 30° C. (-86° F.). Specify Voltage and Frequency when ordering.

Protection: IP44

Reduction Unit: 1:1.5 Ratio

Temperature Range: From 30° C. (-86° F.) to +80° C. (+176° F.).



INSTALLATION / OPERATION

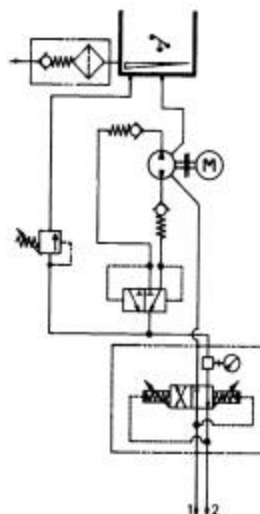
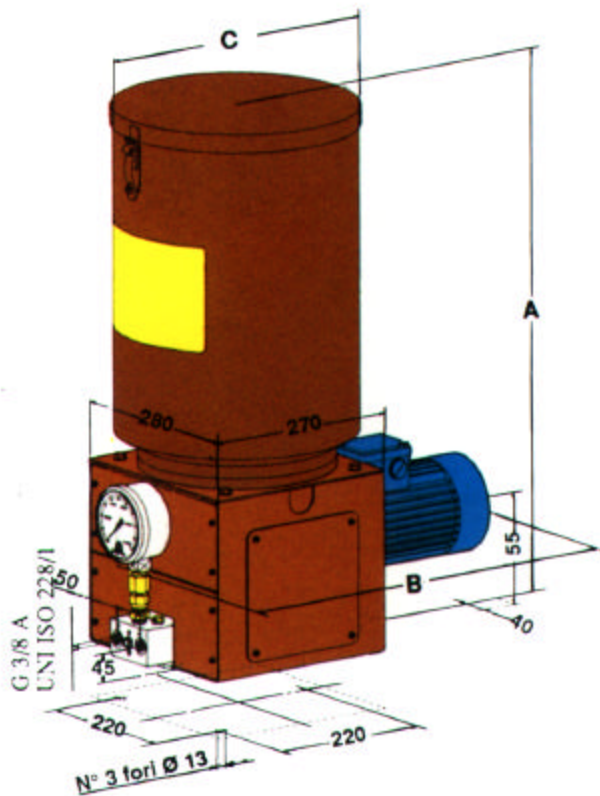
A trolley mounted version is also available. The modular construction of the pump assembly uses common components throughout the range and therefore reduces spare parts inventory. The double pump body has two outlets which can either be combined together for a single outlet for a single line system or remain separate for use with an inverter for dual line systems.

Access to the pump is easy through the reservoir lid or the covers surrounding the pump and reduction unit. Re-filling of the reservoir is recommended through the re-filling filter to prevent contamination from entering the reservoir.

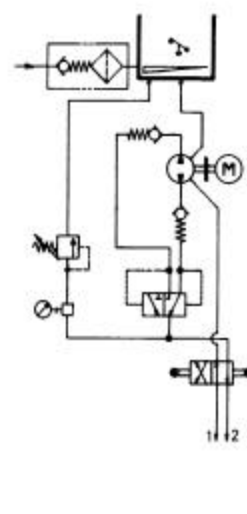
The operation of the 777000 series pumps can be monitored with DropsA's own controllers or by the machines PLC or PC.

ORDERING INFORMATION

Reservoir KG.	Grease			For Oil with Minimum and Maximum Level	Pump Weight Kg.	
	With Impeller Unit 1 (0.37 KW)	For Hard Greases 2 (0.75 KW)	With Pressure Plate For Soft Greases		Oil	Grease
10	777005 777060	- -	777304 777311	777510 777560	31.5	35
30	777010 777040	777207 777273		777521 777572	35	40
100	777020 777083	777271		777535 777584	42.5	50



WITH HYDRAULIC REVERSER

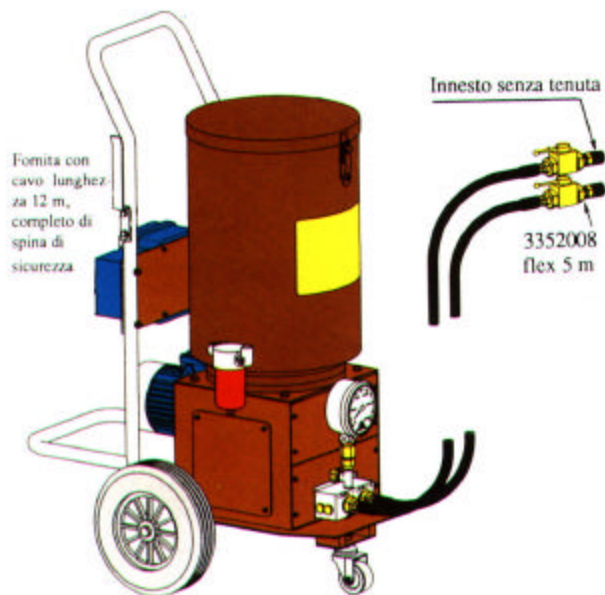


WITH MECHANICAL REVERSER

Hydraulic Diagram (see above):

Trolley Mounted Version (see below):

Reservoir Kg.	Dimensions (mm)		
	A	B	C
10	22.8 (580)	20.5 (520)	10.3 (262)
30	29.9 (760)	20.5 (520)	12.6 (320)
100	38.8 (985)	20.5 (520)	17.8 (451)



Ordering Information For 777000 Series Pumps with Trolley (3 Wheel)

Motor Details	No. of Poles / RPM	Part Number with Reservoir.		Pressure (BAR)	Delivery (cm ³ /min)
		10 Kg.	30 Kg.		
3 Phase 220/380V 50 Hz.	4 / 1500	777950	777951	5800 PSI. (400)	130
3 Phase 220/380V 50 Hz.	2 / 1500	777952	777953	2900 PSI. (200)	260
1 Phase 220V 50 Hz.	3000 Rpm	777954	777955	2900 PSI. (200)	200

U.S.A.
DropsA USA Incorporated
60679 Wing Drive
Utica, Michigan 48315
Telephone (810) 566-1540
Fax (810) 566-1541
E-mail: sales@dropsausa.com

U.K.
DropsA (UK) Ltd.
Unit 6, Egham Business Village
Egham, Surrey TW20 8RB
Telephone (+44) 01784-431177
Fax (+44) 01784-438598
E-mail: salesuk@dropsa.com

AUSTRALIA
DropsA Australia Pty.
No. 7 Warringah Road
Dee Why, NSW 2099
Telephone (+61) 2 9905 0410
Fax (+61) 2 9939 4142
E-mail: sales@dropsa.com

GERMANY
DropsA GMBH
Volmerswerther Strasse 80
40221 Dusseldorf 1,
Deutschland
Telephone (+49) 0211-394-011
Fax (+49) 0211-394-013
E-mail: sales@dropsa.de

ITALY
DropsA SpA
Via B. Croce, 1 20090
Vimodrone (MI)
Telephone (+39) 022507971
Fax (+39) 0225079767
E-mail: sales@dropsa.it